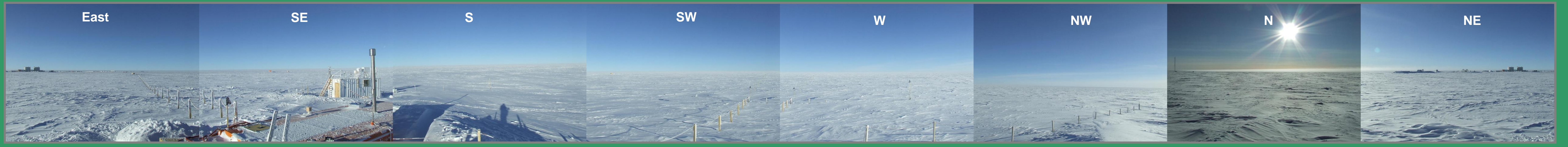


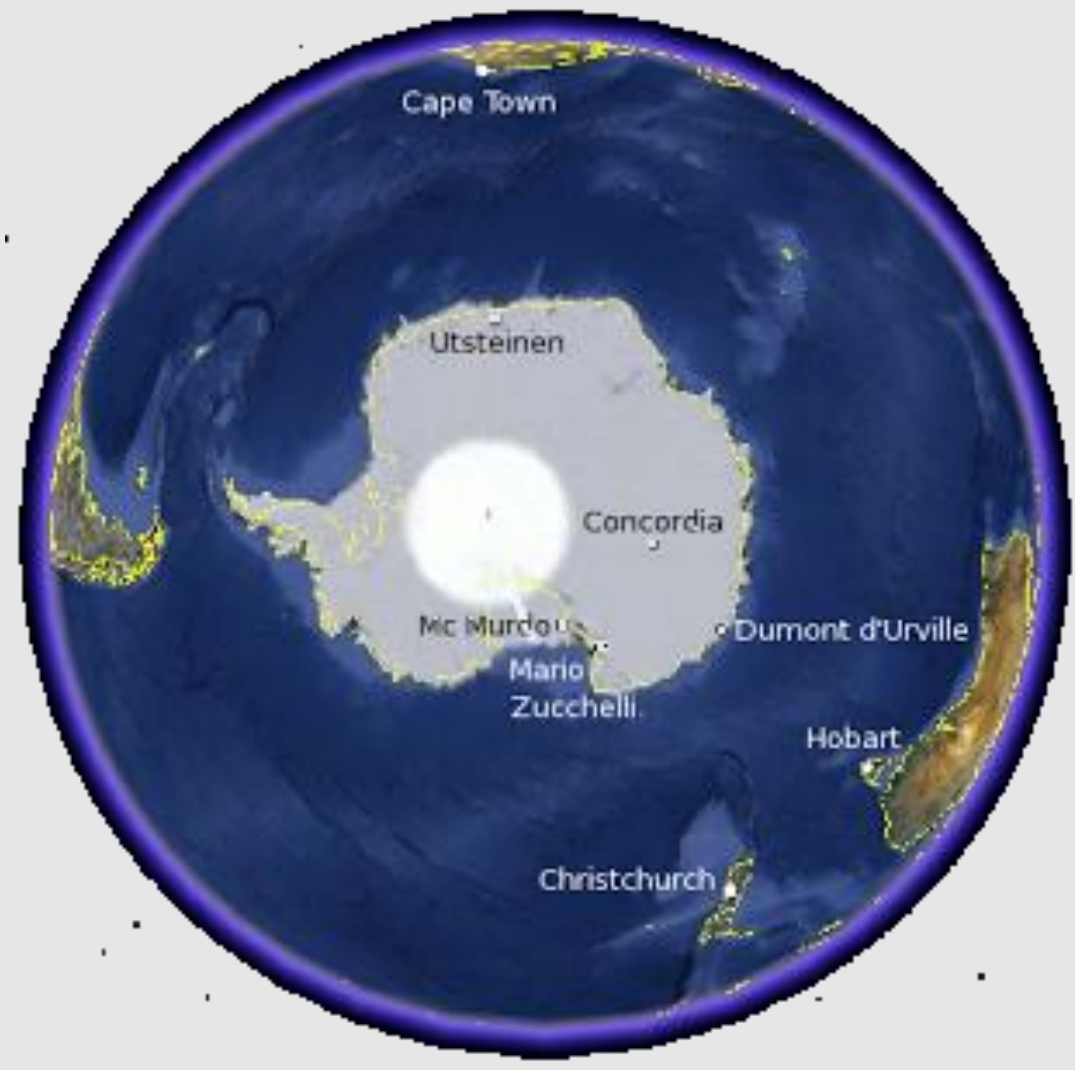
STATUS OF THE DOME-C ANTARCTIC BSRN STATION

M. BUSETTO, C. LANCONELLI, E. SPADANUDA, A. LUPI, M. MAZZOLA, B. PETKOV and V. VITALE
Institute of the Atmospheric Sciences and Climate - CNR ITALY

e-mail: m.busetto@isac.cnr.it a.lupi@isac.cnr.it

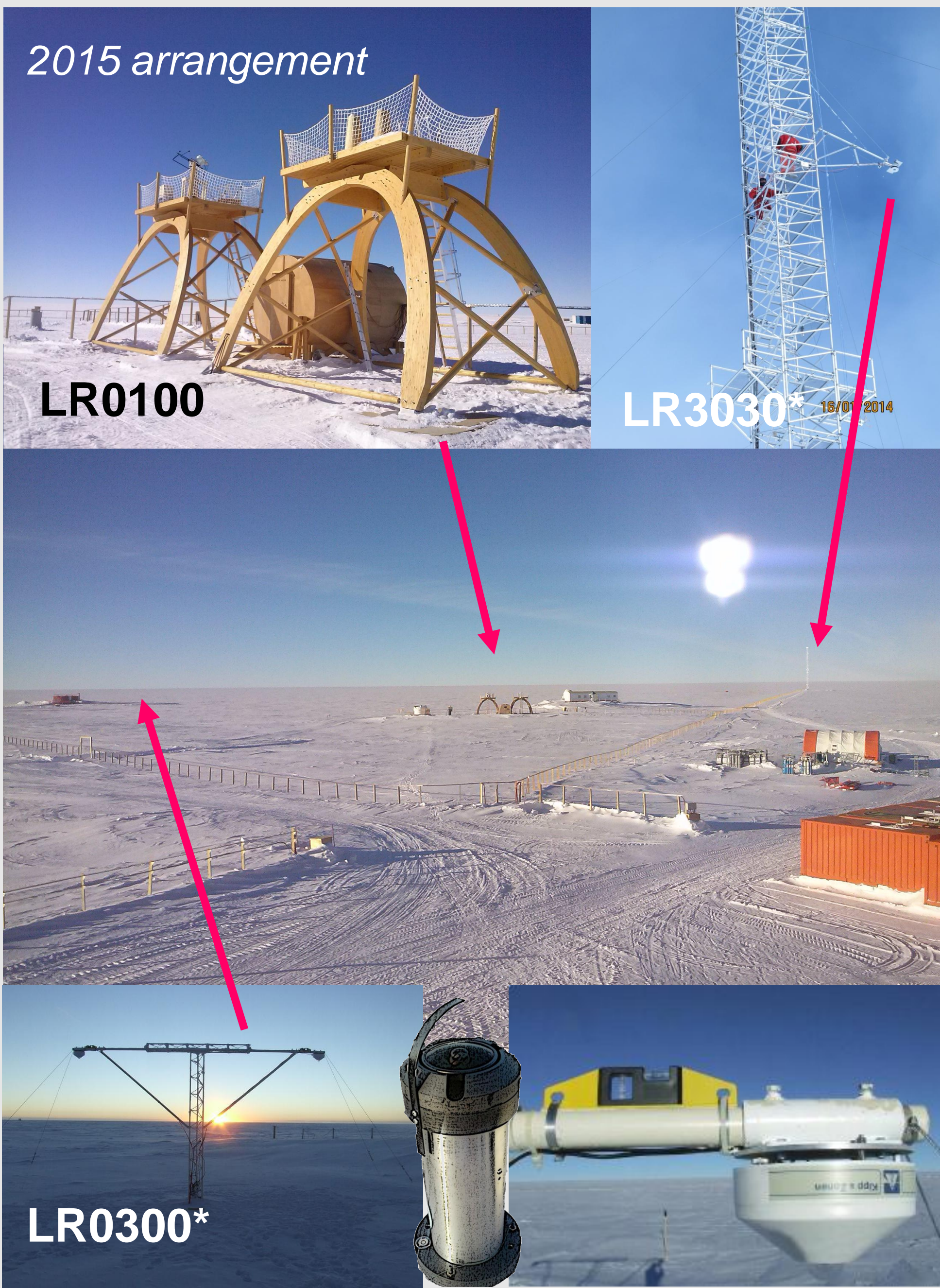


Dome C (75° 06' S, 123° 24' E) is located at 3233 m height on the East Antarctic Plateau, located around 1200 km from the coast

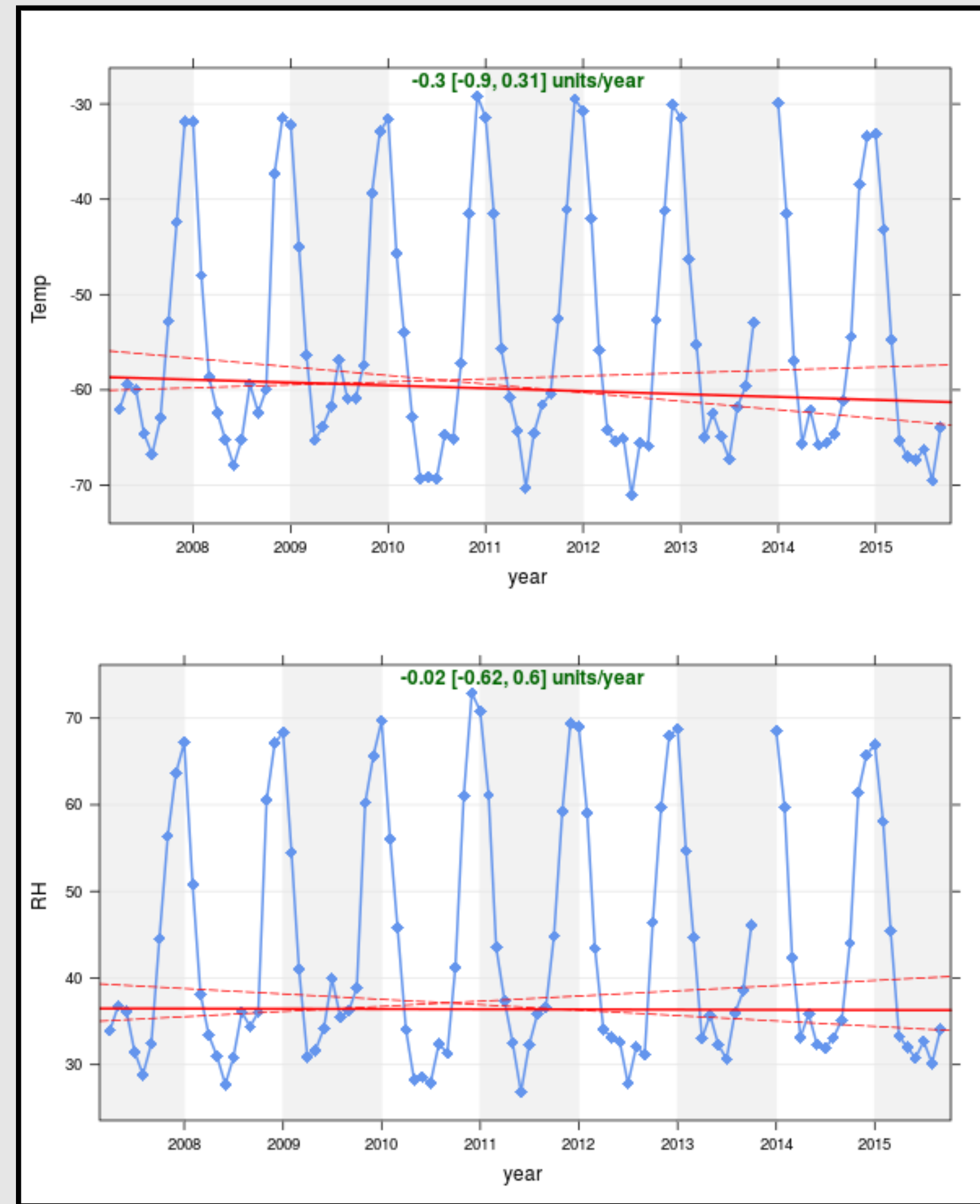


- Altitude : 3233 mt. s.l.m. (630 mb)
- Ice thickness: 3213 mt.
- Distance by Dumont d'Urville: 1100 Km.
- Distance by Baia Terra Nova: 1200 Km.

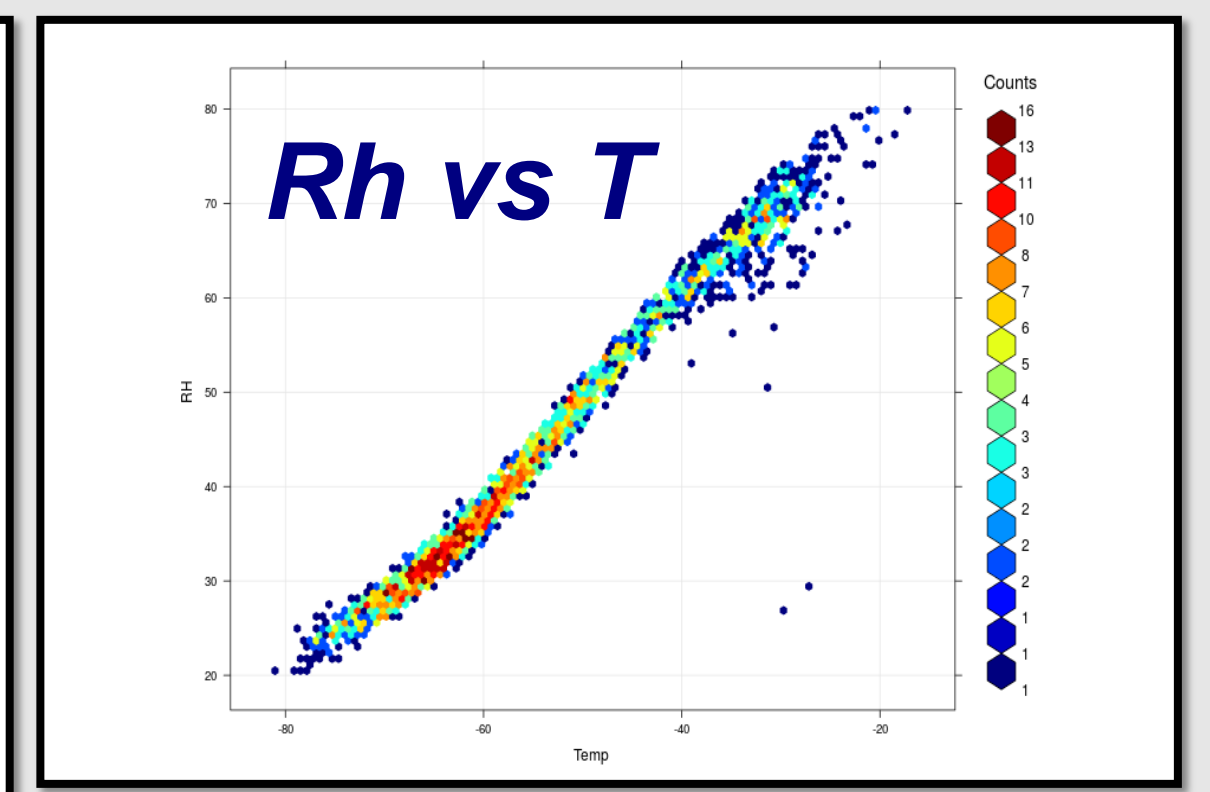
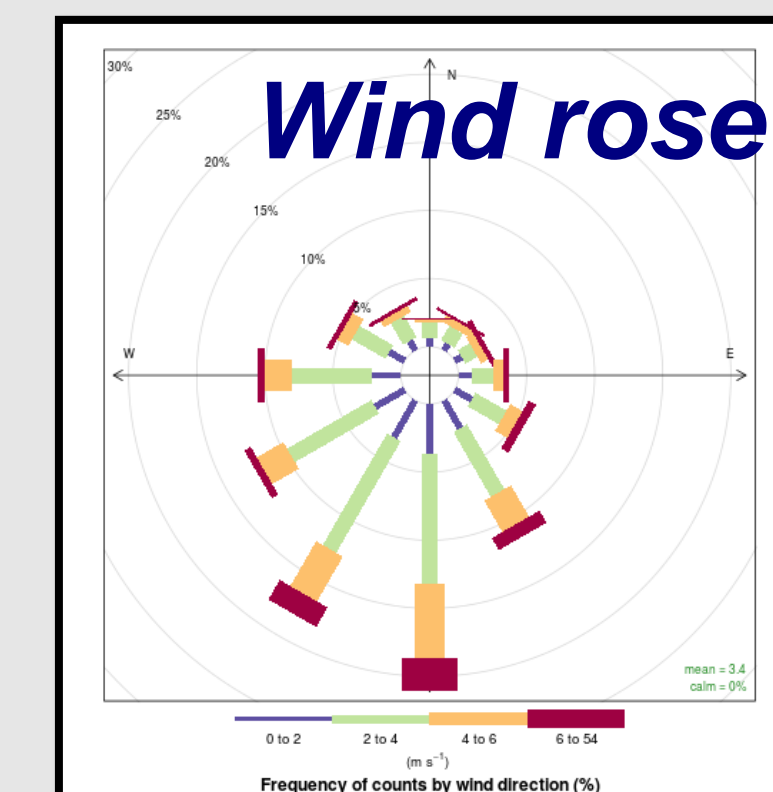
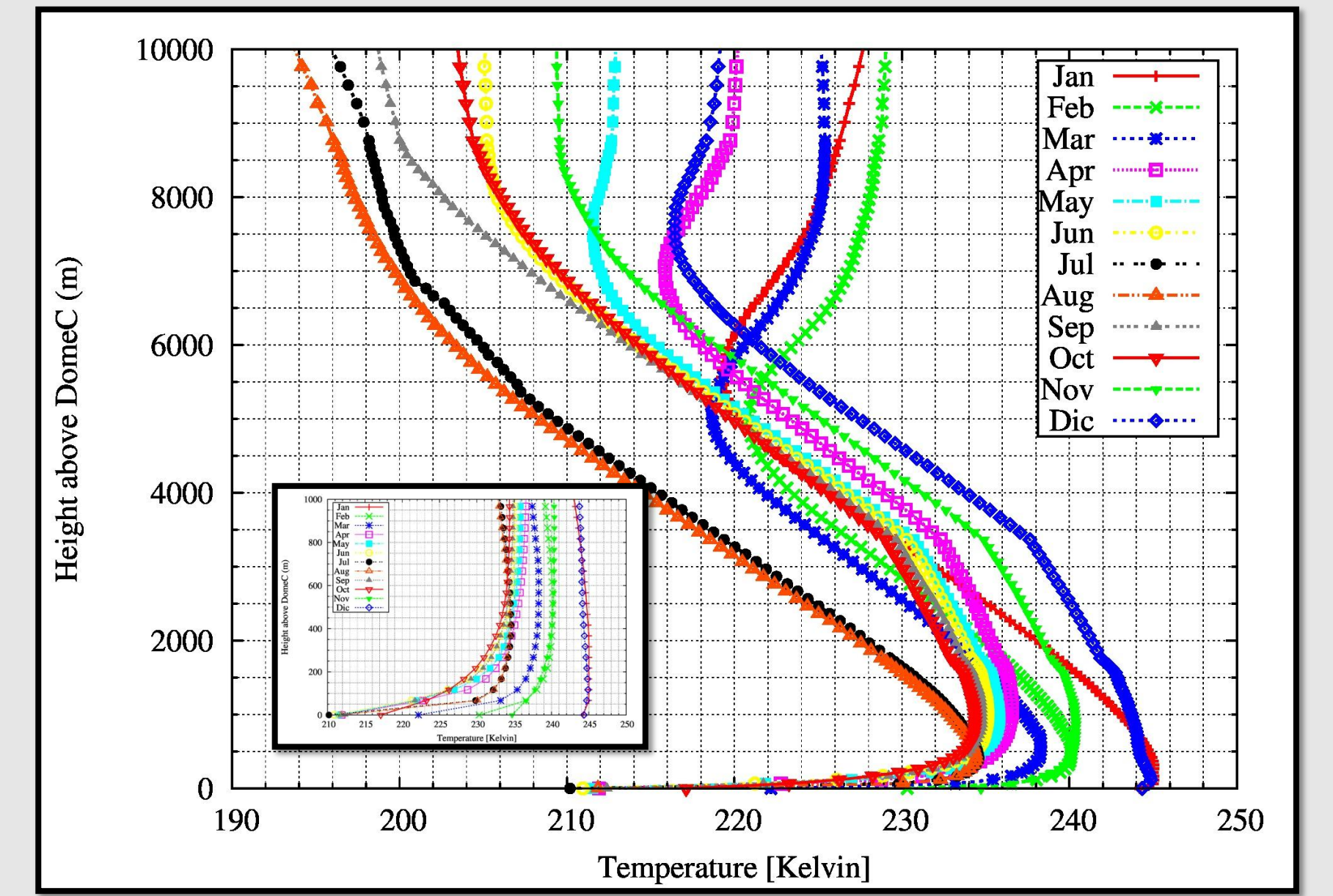
BSRN around Concordia area



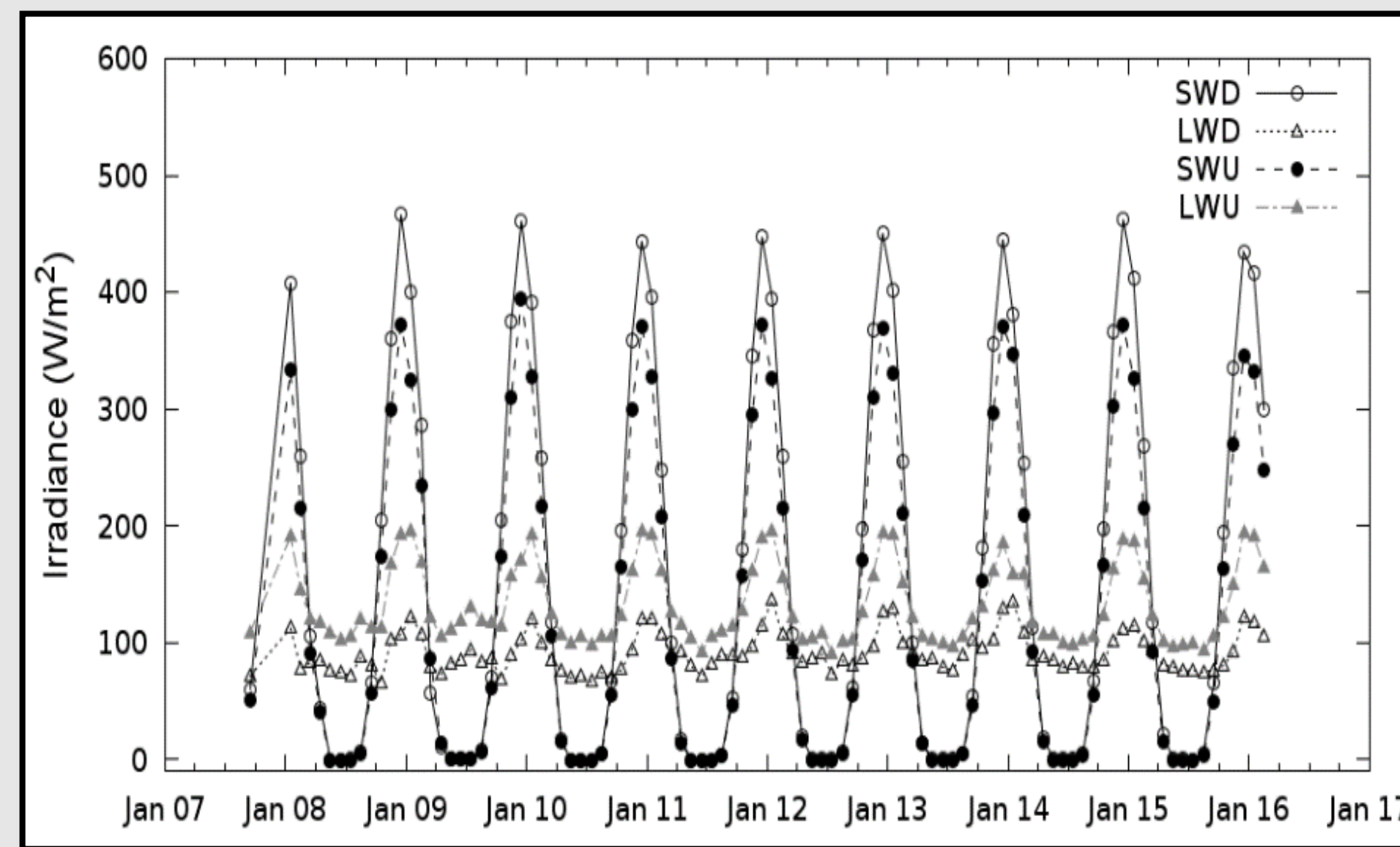
Monthly series of Temperatures and RH



Monthly Temperature profiles of T

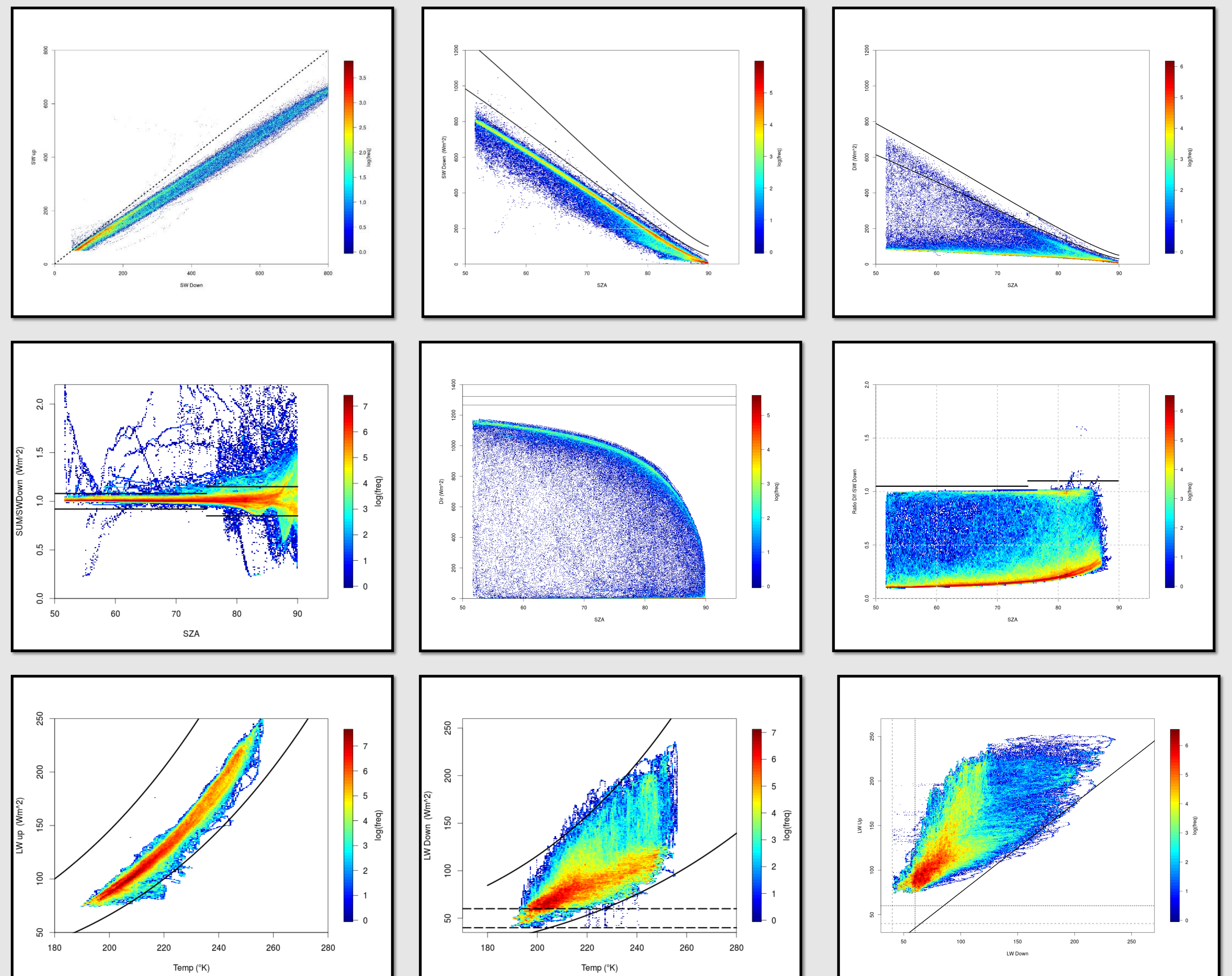


Raw data: monthly mean averages up to now



- BSRN quality check (QC) are based on a series of control on
- 1) the single components in terms of physical possible limits (PPL)
 - 2) extremely rare limits (ERL),
 - 3) Cross correlation components,
 - 4) and surface temperature for what concerns LW data.

Dome-C data quality check (2010 - mid2013)



BSRN submission data status

	2006	2007	2008	2009	2010	2011	2012	2013	2014	2015	2016
LR0100 E-Base (downwell)	X	X	X	X	X	X	X	X	X	X	X...
LR0300 E-Base Upwell (3m)	X	X	X	X	X	X	X	X	X	X	X...
LR3030 E-Base Upwell (30m)					X	X	X	X	X	X	X...



BSRN percentages of submitted validated data