

Response of North American Terrestrial CO₂ Fluxes to Climate Variability

L. Hu^{1,2}, A.E. Andrews², K. Thoning², C. Sweeney², J.B. Miller², E.J. Dlugokencky², P.P. Tans², A. Michalak³, M. Mountain⁴, T. Nehrkorn⁴, S.A. Montzka², D. Worthy⁵, K. McKain^{1,2}, S.E. Michel⁶, B.H. Vaughn⁶, J. White⁶, M. Fischer⁷, S. Biraud⁷, S. Basu^{1,2} and I.R. van der Velde^{1,2}

¹Cooperative Institute for Research in Environmental Sciences (CIRES), University of Colorado, Boulder, CO 80309; 303-497-5238, E-mail: lei.hu@noaa.gov

²NOAA Earth System Research Laboratory, Global Monitoring Division (GMD), Boulder, CO 80305

³Carnegie Institution for Science, Department of Global Ecology, Stanford, CA 94305

⁴Atmospheric and Environmental Research (AER), Inc., Lexington, MA 02421

⁵Environment and Climate Change Canada, Toronto, Ontario, Canada

⁶Institute of Arctic and Alpine Research (INSTAAR), University of Colorado, Boulder, CO 80309

⁷Lawrence Berkeley National Laboratory (LBNL), Berkeley, CA 94720

North America is an important source and terrestrial sink for atmospheric carbon dioxide (CO₂). However, uncertainties on North American terrestrial CO₂ fluxes are large, including their magnitude, distribution, inter-annual variability, and trend. Given such large uncertainties, it has been extremely difficult to identify a coherent relationship between climate drivers and North American terrestrial CO₂ fluxes. Here, we analyzed atmospheric CO₂ and delta carbon-13 dioxide ($\delta^{13}\text{CO}_2$) data obtained from North America under the ESRL/GMD Greenhouse Gas Reference Network for the last two decades. Derived atmospheric CO₂ and $\delta^{13}\text{CO}_2$ anomalies indicate consistent responses of North American terrestrial CO₂ fluxes to large climate phenomena, such as El Niño and Southern Oscillation (ENSO) and the Arctic Oscillation (Figure 1). Such persistent responses, as we find, are primarily driven by the modulation of hydrological and temperature conditions associated with these large global climate phenomena. Inverse analyses of the same suite of atmospheric CO₂ observations over the last decade allowed us to further quantify the North American CO₂ flux anomalies corresponding to ENSO and the Arctic Oscillation. The derived annual anomalies of North American terrestrial CO₂ fluxes are substantial compared to the variability of anthropogenic greenhouse gas emissions over North America.

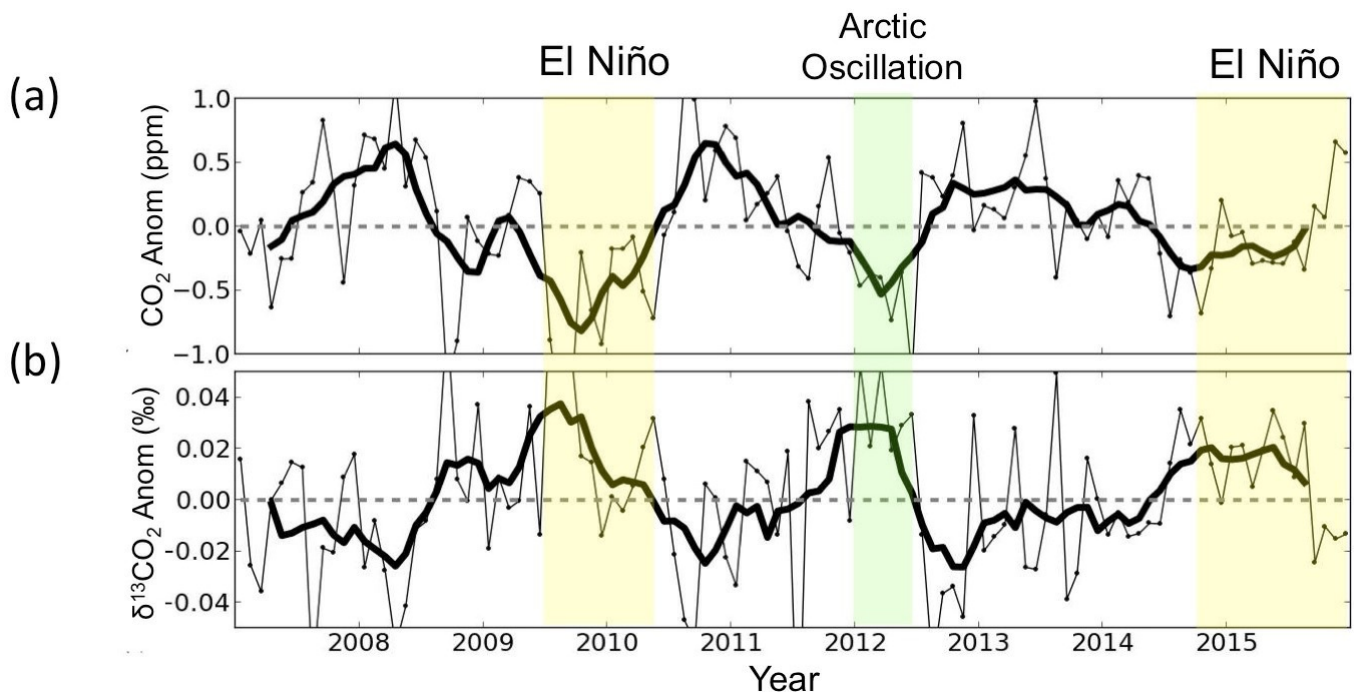


Figure 1. Monthly anomalies (thin lines) of atmospheric CO₂ and $\delta^{13}\text{CO}_2$ averaged across North American sampling sites under the ESRL/GMD Greenhouse Gas Reference Network. Thick lines indicate 6-month running averages on monthly anomalies. Yellow shading indicates El Niño periods whereas green shading indicates the period influenced by the Arctic Oscillation over the last decade.