

NH "Summer" (Jun–Sep)

2.50 ± 5.31
 $n=4713$

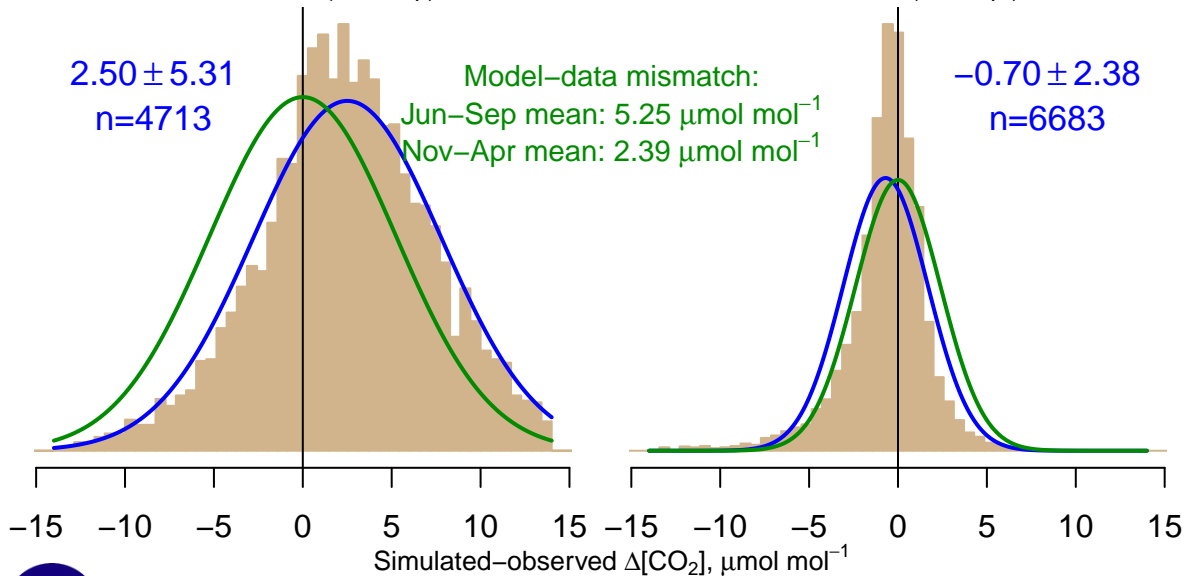
Model–data mismatch:

Jun–Sep mean: $5.25 \mu\text{mol mol}^{-1}$

Nov–Apr mean: $2.39 \mu\text{mol mol}^{-1}$

NH "Winter" (Nov–Apr)

-0.70 ± 2.38
 $n=6683$



Data from 13–Feb–2009 to 28–Feb–2021



co2_amt_tower-insitu_1_allvalid-30magl
CT2022, created 20–Jan–2023 18:07