

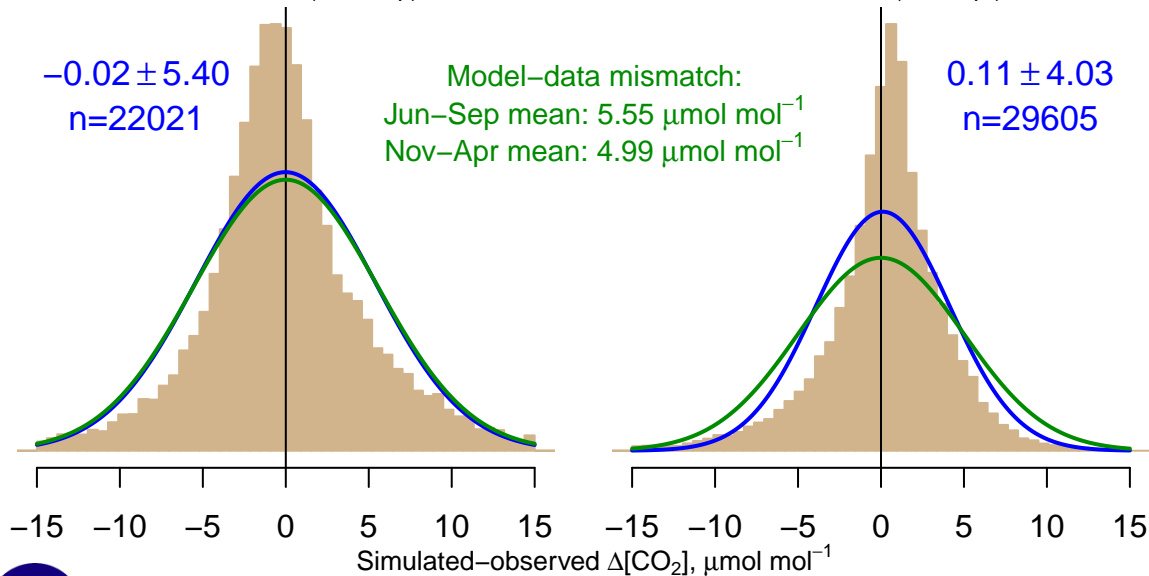
NH "Summer" (Jun–Sep)

-0.02 ± 5.40
 $n=22021$

Model–data mismatch:
Jun–Sep mean: $5.55 \mu\text{mol mol}^{-1}$
Nov–Apr mean: $4.99 \mu\text{mol mol}^{-1}$

NH "Winter" (Nov–Apr)

0.11 ± 4.03
 $n=29605$



Data from 05–May–2007 to 26–Jul–2016

