

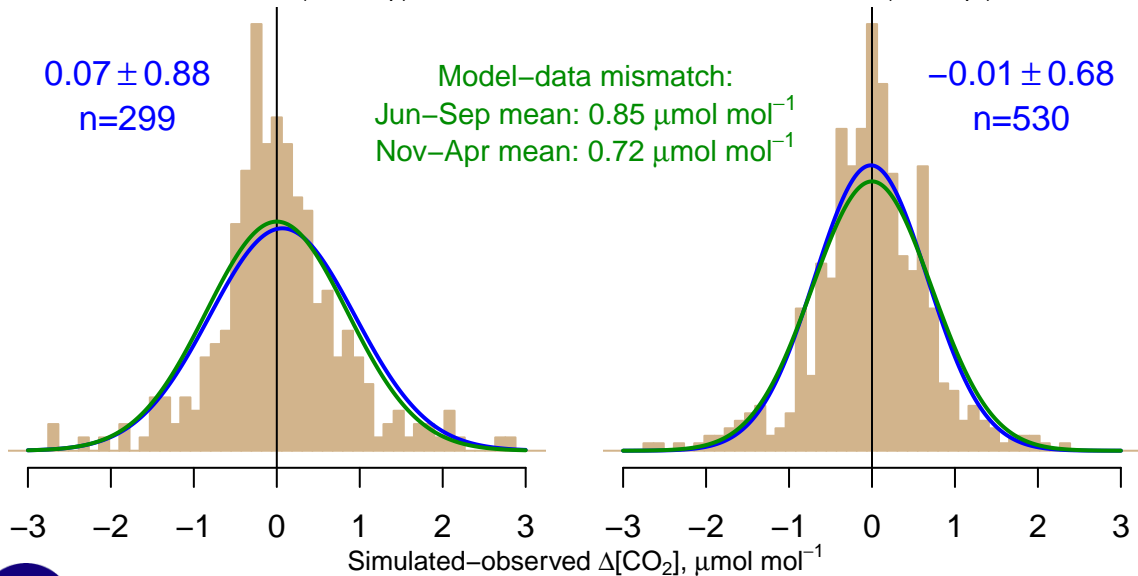
NH "Summer" (Jun–Sep)

0.07 ± 0.88
 $n=299$

Model–data mismatch:
Jun–Sep mean: $0.85 \mu\text{mol mol}^{-1}$
Nov–Apr mean: $0.72 \mu\text{mol mol}^{-1}$

NH "Winter" (Nov–Apr)

-0.01 ± 0.68
 $n=530$



Data from 02–Jan–2001 to 06–Jan–2021



co2_gmi_surface-flask_1_representative
CT2022, created 20–Jan–2023 18:26