

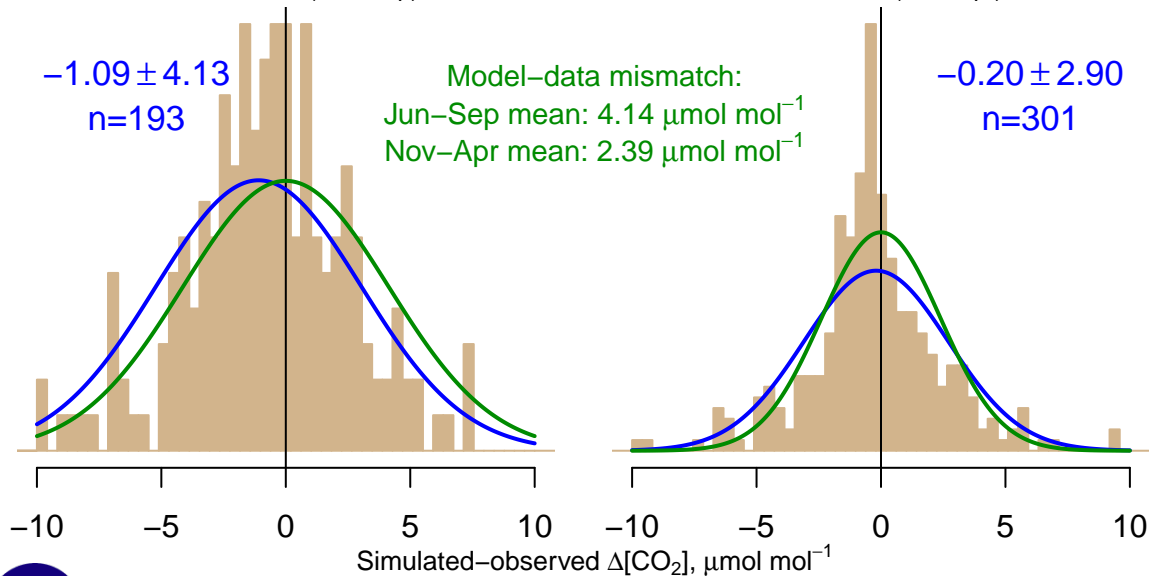
NH "Summer" (Jun–Sep)

-1.09 ± 4.13
 $n=193$

Model–data mismatch:
Jun–Sep mean: $4.14 \mu\text{mol mol}^{-1}$
Nov–Apr mean: $2.39 \mu\text{mol mol}^{-1}$

NH "Winter" (Nov–Apr)

-0.20 ± 2.90
 $n=301$



Data from 27–May–2009 to 27–Feb–2021

